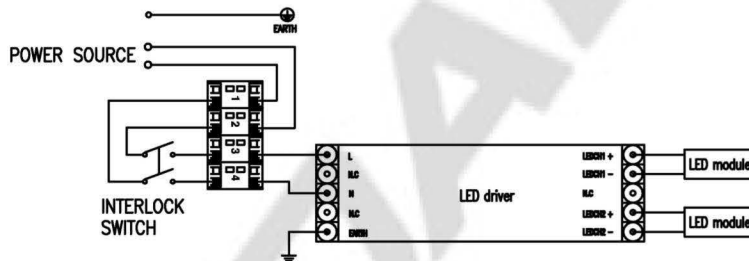
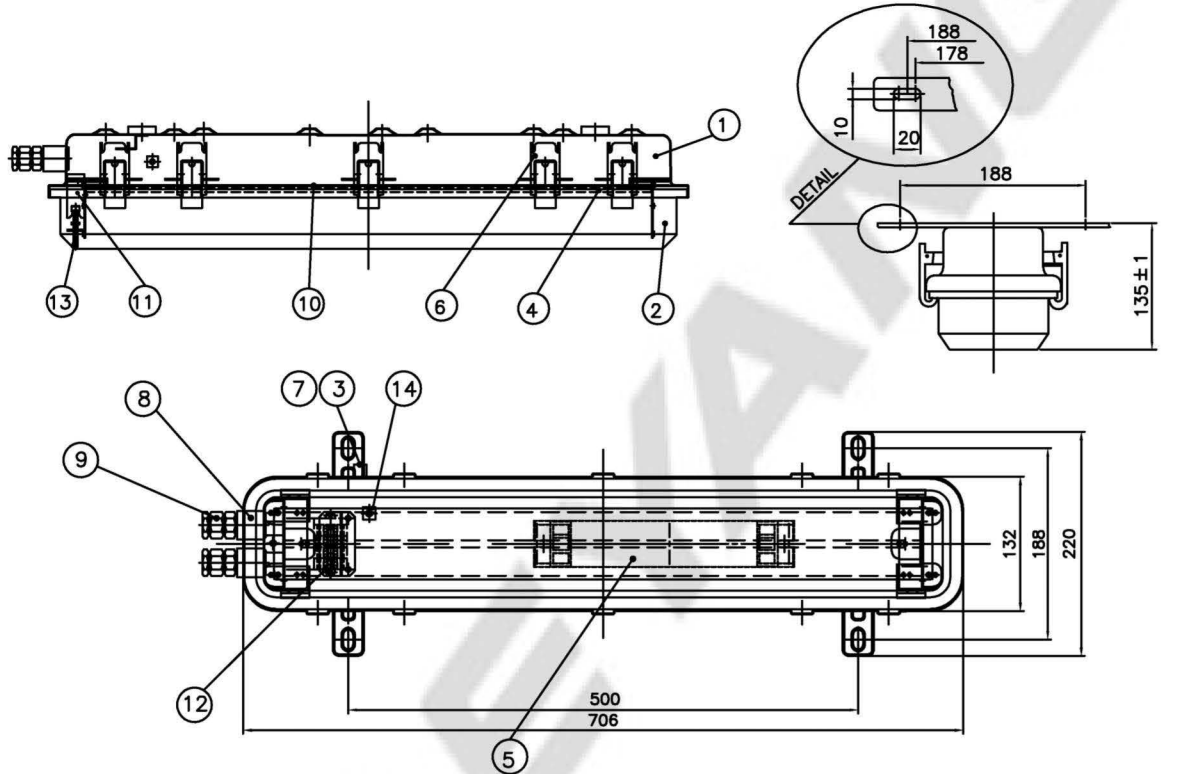
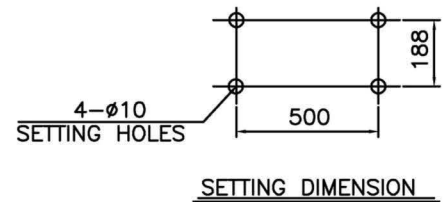


CAPACITY	SYMBOL/SERIAL NO.	CIRCUIT DIAGRAM
AC100-240V, 50/60Hz		
12.5W x 2		



CIRCUIT DIAGRAM



SETTING DIMENSION

14	INSIDE EARTH BOLT	STAINLESS STEEL316	1		7	OUTSIDE EARTH BAR	STAINLESS STEEL316	1	
13	INTERLOCK SHAFT	BRASS	1		6	LATCH	STAINLESS STEEL316L	10	
12	TERMINAL BLOCK	-	1	CLAMPING 4P	5	LED driver	-	1	
11	INTERLOCK SWITCH	-	1		4	LED module	-	2	4,000±300K
10	REFLECTOR	STEEL	1		3	OUTSIDE EARTH BOLT	STAINLESS STEEL316	1	M6
9	CABLE GLAND(M20)	BRASS	2	E1FW-20s (Ø10.5~Ø15.5)	2	GLOBE	POLYCAR-BONATE	1	
8	GLAND HUB(M20)	STAINLESS STEEL316	2		1	BODY	STAINLESS STEEL316L	1	
NO	NAME OF PART	MATERIAL	Q'TY	REMARKS	NO	NAME OF PART	MATERIAL	Q'TY	REMARKS

APPROVED	B. K. KIM	UNIT	MM	TITLE: INCREASED SAFETY LED CEILING LIGHT (Ex demb IIC T4 Gb) FOR MARINE USE					
CHECKED		SCALE	N/S						
DESIGN	B. I. KIM	COLOR	N-9.3						
DATE	2015.12.04	IP	66/67						
				MODEL NO.	EXLED-125ed-550UWM20s2HC40	WEIGHT	5.2 Kg		
				DWG NO.	L71370110	SHEET NO.	44		

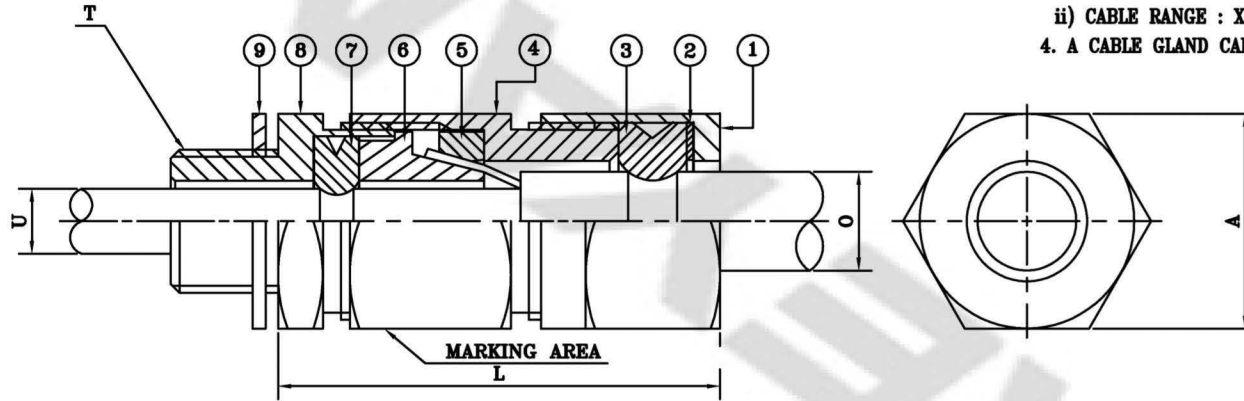
Ex

NO	CONTENT	DATE	REVISER	APPROVAL
△				
△				
△				

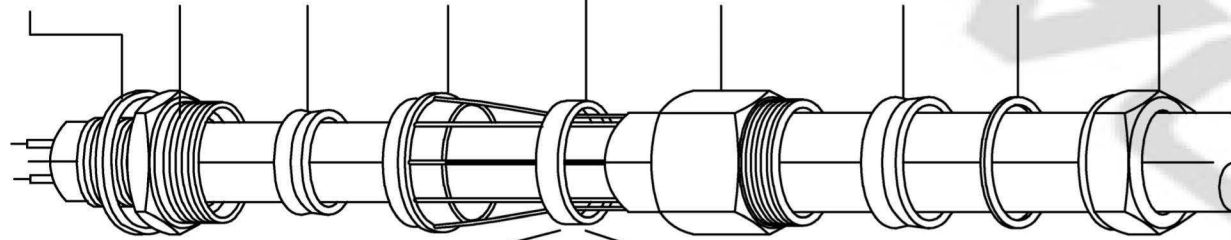
MODEL	O		U		A	L	T		DIAMETER OF ARMOUR BRAIDED MAX.
	MAX.	MIN.	MAX.	MIN.			MAX.	METRIC	
DY-E1FW-10	φ10.0	φ10.5	φ5.0	φ6.0	24	56	M10xP1.5	NPT 3/8"	0.6
DY-E1FW-20S	φ15.5	φ10.5	φ11.0	φ9.0	24	56	M20xP1.5	NPT 1/2"	0.6
DY-E1FW-20	φ17.5	φ18.0	φ14.5	φ11.0	30	54	M20xP1.5	NPT 5/4"	0.6
DY-E1FW-20X	φ20.9	φ17.0	φ14.5	φ11.0	30	54	M20xP1.5	NPT 3/4"	0.6

- NOTE -

- METHOD OF MARKING : PRESSING
- INFORMATION OF MARKING (IECE<sub>x</sub>)
  - DAEYANG DY-E1FW-XXX NPT X/X" OR MXX Ta : -60°C~80°C
  - CABLE RANGE : XX~XX Exd IIC IP67 IECE<sub>x</sub> KGS 10.0021X
- INFORMATION OF MARKING (ATEX)
  - DAEYANG DY-E1FW-XXX NPT X/X" OR MXX Ta : -60°C~80°C
  - CABLE RANGE : XX~XX (Ex)II 2G Exd IIC IP67 LCIB 11 ATEX 3001X **CE**
- A CABLE GLAND CAN ACCEPT ONLY ONE SPECIFIC ELASTOMERIC SEALING RING.



⑨ ARMOUR FEMALE CLAMP  
 ⑨ TEFLON WASHER ⑧ GLAND BODY ⑦ INNER SEAL ⑥ ARMOUR MALE CLAMP ④ CLAMP HOUSING ③ OUTER SEAL ② SKID WASHER ① CABLE NUT



CASE 1 (ARMOUR FEMALE CLAMP DIRECTION)

: 0 ~ 0.6 mm



CASE 2 (ARMOUR FEMALE CLAMP DIRECTION)

: 0.9 ~ 1.25 mm



NO.	MODEL	PART	MATERIAL	Q'TY	REMARKS
1		CABLE NUT	BRASS/STAINLESS STEEL 316	1	
2		SKID WASHER	POLYAMIDE	1	
3		OUTER SEAL	SILICONE	1	
4		CLAMP HOUSING	BRASS/STAINLESS STEEL 316	1	
5		ARMOUR FEMALE CLAMP	BRASS/STAINLESS STEEL 316	1	
6		ARMOUR MALE CLAMP	BRASS/STAINLESS STEEL 316	1	
7		INNER SEAL	SILICONE	1	
8		GLAND BODY	BRASS/STAINLESS STEEL 316	1	
9		TEFLON WASHER	TEFLON	1	

TITLE		SCALE	UNIT	MM
CABLE GLAND		1/5		
PROJECT METHOD		WEIGHT	KG	
APPROVED	B. K. KIM	MATERIAL		
CHECKED	W. J. JI	DWG NO.		
DRAWN	B. I. KIM	SHEET NO.		
DATE	2017. 02. 01			44-A

**DAEYANG**